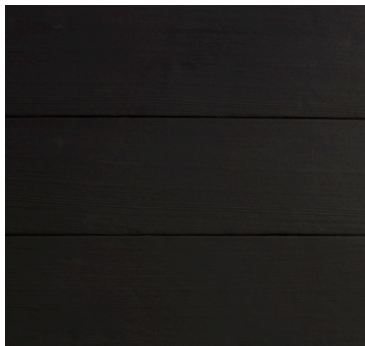


WESTERN RED CEDAR



PACKARD 2.0
WESTERN RED CEDAR - CVG



TRUMAN
WESTERN RED CEDAR - STK



JENNINGS
WESTERN RED CEDAR - STK

SPECIFICATIONS:

SPECIES:	Western Red Cedar
APPLICATIONS:	Exterior Cladding, Interior wall cladding, ceilings, & millwork
GRADES:	Select Tight Knot and Clear Vertical Grain
Janka Hardness (ASTM D 1037):	350 *
Flame Spread Class Rating (ASTM E84):	Class II (B) **
Smoke Developed Index (ASTM E84):	140 **

NOTE: ALL PRODUCTS ARE AVAILABLE FIRE TREATED TO CLASS A FOR INTERIOR APPLICATIONS

* Janka Rating from similarly tested products - expected to be close to actual measurements of reSAWN TIMBER co.'s Western Red Cedar

** Class Rating, Flame Spread Index and Smoke Developed Index per 3rd party testing from the Wood Database. Contact reSAWN for more information.

Photo Disclaimer: Product photos are meant to be a general guide to product appearance only. Due to our handcrafted process and wood being a product of nature, the color, grain pattern, character and profile will vary between individual boards on a project and will never be an exact match.

GRADING GUIDELINES:

Select Tight Knot (STK)

Rustic in appearance; Knots define the visual character; Knots are sound and tight.

A & Better “Clear” Vertical Grain

This is the highest grade of Western Red Cedar. Vertical grain means that the growth rings are parallel to each other on the face of the board, and very light skips on the non-graded face. the wood is sawn specifically to achieve that look. Limiting provisions include: very light torn grain and very light skips on the non-graded face.

INSTALLATION GUIDE:

- Rear ventilation and weather acclimatization are vital to minimize swelling and shrinking
- EXTERIOR: Visit resawntimberco.com A+D Support Page to download Exterior Installation Guidelines
- INTERIOR: Visit resawntimberco.com A+D Support Page to download Interior Charred Installation Guidelines

PACKAGING AND FREIGHT: All shipments are carefully packaged on 16’ long pallets (not boxed or bundled)

FINISH SPECS:

Interior

Finished on face only

Exterior

Finished on face only, sealed on back & 2 long edges

SUSTAINABLE ATTRIBUTES:

POSSIBLE LEED CREDITS: MR 5 - Regional Materials (based on project location)

STRENGTH and MECHANICAL PROPERTIES:***

	Western Red Cedar
DENSITY	21 lbs/ft ³
DIMENSIONAL STABILITY	0.42
THERMAL CONDUCTIVITY	R-value=1.35"

SIZE DIFFERENTIAL BETWEEN UNSEASONED and DRY WRC:***

NOMINAL DIMENSION (INCHES)	SIZE DIFFERENTIAL BETWEEN UNSEASONED AND DRY LUMBER AFTER SURFACING (INCHES)
1-1/2 OR LESS	1/32
2-4	1/16
5-7	1/8
8+	1/4

SHRINKAGE of WRC:***

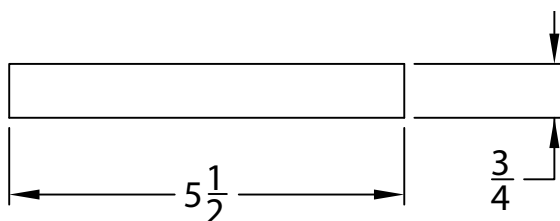
DIRECTION OF SHRINKAGE	FROM GREEN (25% OR GREATER MOISTURE CONTENT) TO:			FROM KILN DRIED (15% AVERAGE MOISTURE CONTENT) TO:		
	15%	12%	6%	15%	12%	6%
RADIAL	.96	1.2	1.8	0	.3	1
TANGENTIAL	2	2.6	3.8	0	.7	2.1

***Based on research conducted by RealCedar®

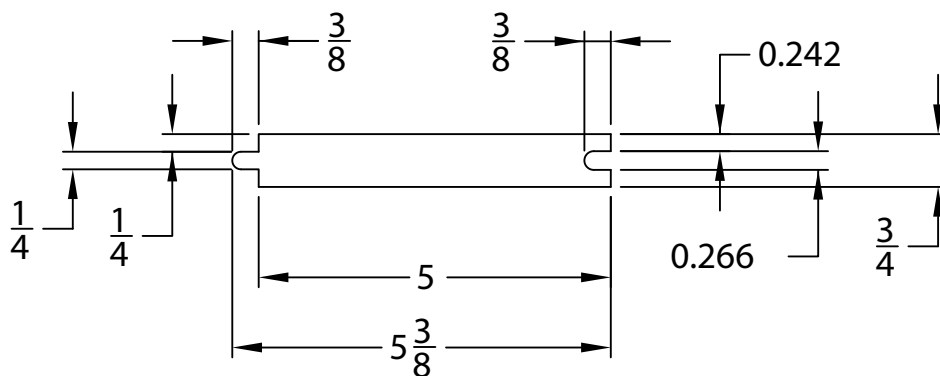
WESTERN RED CEDAR - DIMENSIONS & MILLING - STK and CVG:

- +/- 3/4" thick X +/- 5" wide X 6-16' random lengths - Tongue & Groove or Standard Shiplap
- +/- 3/4" thick X +/- 5-1/2" wide X 6-16' random lengths - S4S
- Shiplap with Reveal is custom order - please contact us for additional details
- Custom width, lengths, and millings available.

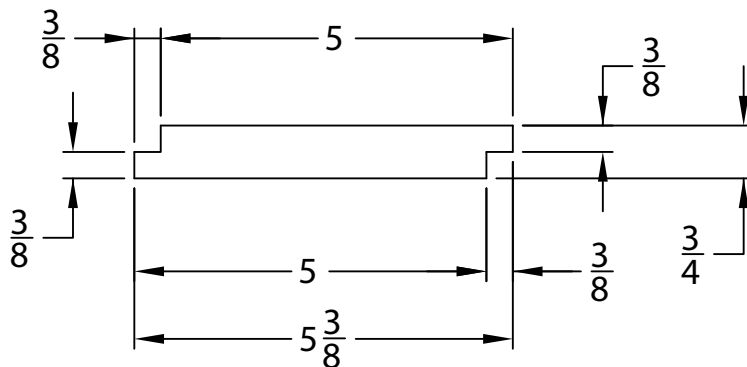
S4S



TONGUE & GROOVE



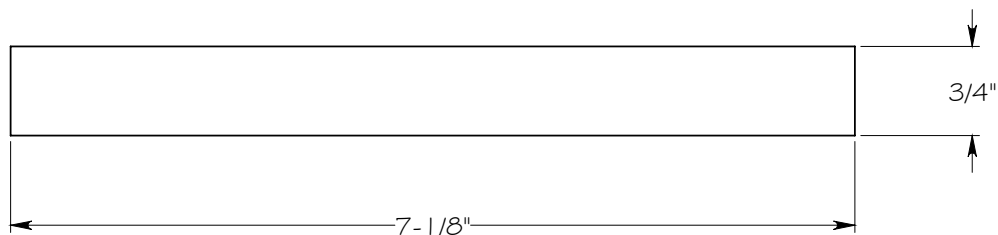
STANDARD SHIPLAP



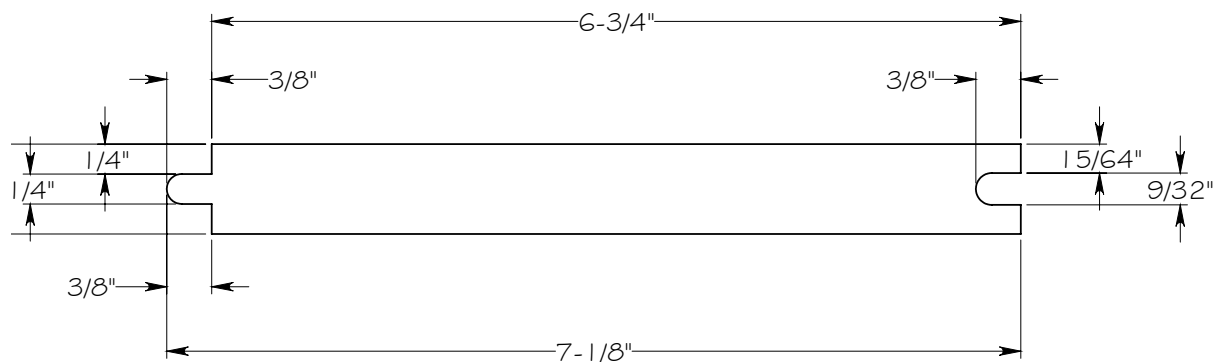
WESTERN RED CEDAR - DIMENSIONS & MILLING - STK:

- +/- 3/4" thick X +/- 6-3/4" wide X 6-16' random lengths - Tongue & Groove or Standard Shiplap
- +/- 3/4" thick X +/- 7-1/8" wide X 6-16' random lengths - S4S
- Shiplap with Reveal is custom order - please contact us for additional details
- Custom width, lengths, and millings available.

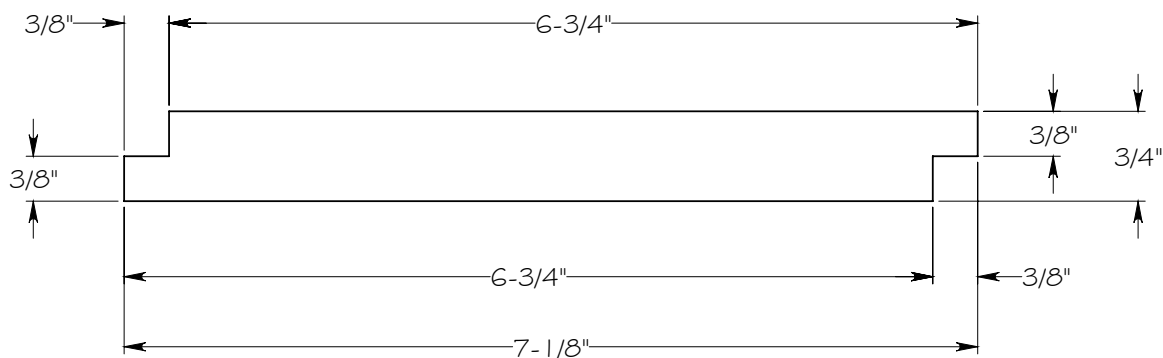
S4S



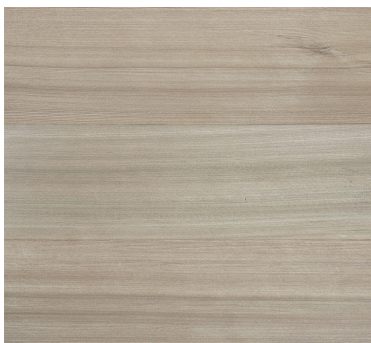
TONGUE & GROOVE



STANDARD SHIPLAP



ALASKAN YELLOW CEDAR



WILLIWAW
WEATHERED ALASKAN YELLOW
CEDAR - CVG



MATANUSKA
WEATHERED ALASKAN YELLOW
CEDAR - CVG



TAKU
WEATHERED ALASKAN YELLOW
CEDAR - STK



WASHOE
WEATHERED ALASKAN YELLOW
CEDAR - STK



BROOKINGS
WEATHERED ALASKAN YELLOW
CEDAR - STK

SPECIFICATIONS:

SPECIES:	Alaskan Yellow Cedar
APPLICATIONS:	Exterior Cladding, Interior wall cladding, ceilings, & millwork
Janka Hardness (ASTM D 1037):	580 *
Flame Spread Class Rating (ASTM E84):	Class II (B) **
Smoke Developed Index (ASTM E84):	115 **

NOTE: WILLIWAW IS AVAILABLE FIRE TREATED TO CLASS A FOR INTERIOR APPLICATIONS

* Janka Rating from similarly tested products - expected to be close to actual measurements of reSAWN TIMBER co.'s Western Red Cedar

** Class Rating, Flame Spread Index and Smoke Developed Index per 3rd party testing from the Wood Database. Contact reSAWN for more information.

Photo Disclaimer: Product photos are meant to be a general guide to product appearance only. Due to our handcrafted process and wood being a product of nature, the color, grain pattern, character and profile will vary between individual boards on a project and will never be an exact match.

GRADING GUIDELINES:

Select Tight Knot (STK)

This is the highest grade of Western Red Cedar. Vertical grain means that the growth rings are parallel to each other on the face of the board, and the wood is sawn specifically to achieve that look. Limiting provisions include: very light torn grain and very light skips on the non-graded face.

A & Better "Clear" Vertical Grain

This is the highest grade of Western Red Cedar. Vertical grain means that the growth rings are parallel to each other on the face of the board, and very light skips on the non-graded face. the wood is sawn specifically to achieve that look. Limiting provisions include: very light torn grain and very light skips on the non-graded face.

INSTALLATION GUIDE:

- Rear ventilation and weather acclimatization are vital to minimize swelling and shrinking
- EXTERIOR: Contact reSAWN for Install Instructions
- INTERIOR: Visit resawntimberco.com A+D Support Page to download Interior Wall Cladding Install Guidelines

PACKAGING AND FREIGHT: All shipments are carefully packaged on 16' long pallets (not boxed or bundled)

FINISH SPECS:

Interior

Finished on face only

Exterior

Finished on face only, sealed on back & 2 long edges

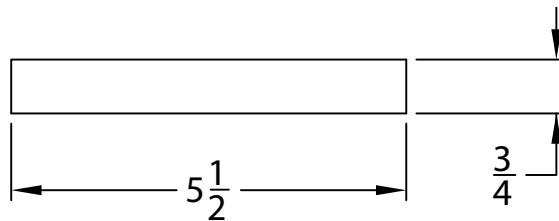
SUSTAINABLE ATTRIBUTES:

POSSIBLE LEED CREDITS: MR 5 - Regional Materials (based on project location)

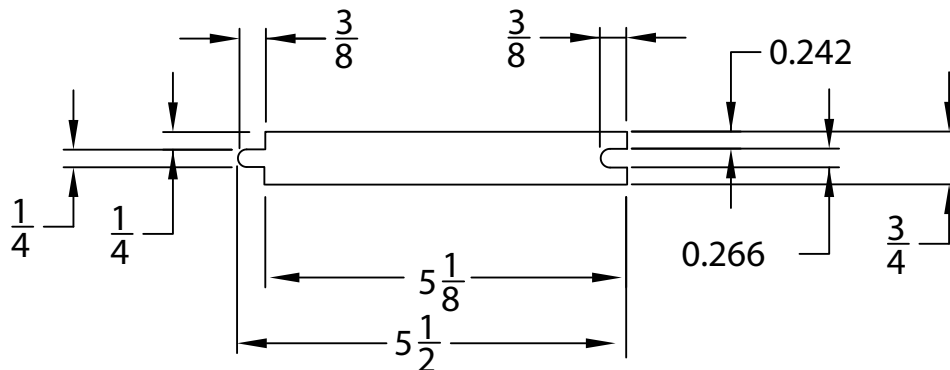
ALASKAN YELLOW CEDAR - DIMENSIONS & MILLING:

- 3/4" thick X 5-1/8" wide X 6-16' random lengths - Tongue & Groove or Standard Shiplap
- 3/4" thick X 5-1/2" wide X 6-16' random lengths - S4S
- Shiplap with Reveal is custom order - please contact us for additional details
- Custom width, lengths, and millings available

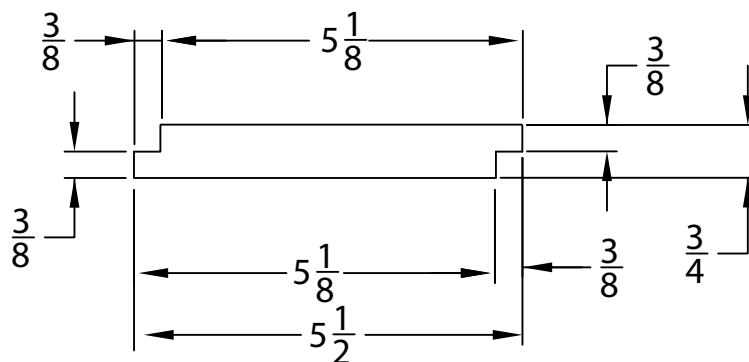
S4S



TONGUE & GROOVE



STANDARD SHIPLAP



vers. 7/24