

Project: Private Residence - Chestnut Hill
Location: Philadelphia, PA
Architect: Fury Design

Product: **BENGAL** from the **RUSTIC MODERN** Collection

Located in Chestnut Hill, one of the Philadelphia region's most beautiful and architecturally distinguished communities, this private residence exemplifies the design intention behind reSAWN TIMBER co.'s RUSTIC MODERN Collection. BENGAL is made with Reclaimed Heart Pine and a unique, multi-step finish in Hardwax Oil.

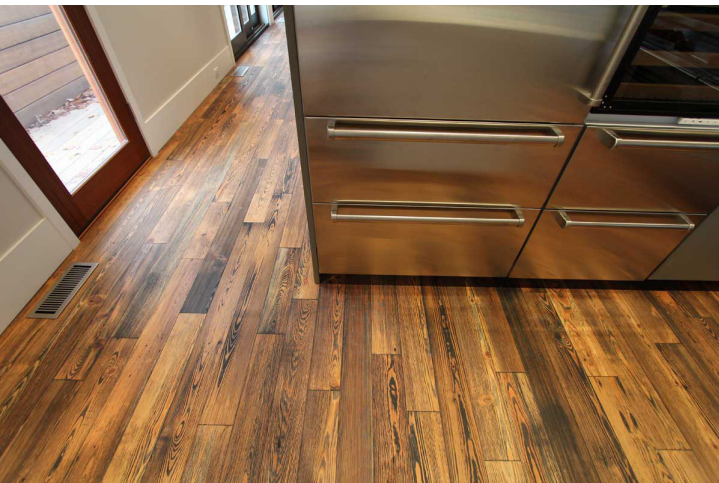


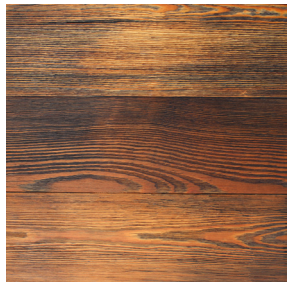
Photo credit: ©reSAWN TIMBER co. 2012

PRODUCT SPECIFIC DATA:

reSAWN TIMBER co. worked with the architectural team at Fury Design to specify **BENGAL** to achieve the desired aesthetic. **BENGAL** is available in solid or engineered construction, and in a variety of widths & lengths.

Flooring:

BENGAL - Reclaimed Heart Pine - Engineered, Prefinished
 5/8" thick (4 mm wear layer) X 5" wide X 2-10' random lengths
 Tongue & Groove, Endmatched, Microbeveled Edges and Ends
 Prefinished with Hardwax Oil



BENGAL

SPECIES: Reclaimed Heart Pine
GRADE: Character
FINISH: Hardwax Oil
 Janka Hardness (ASTM D 1037): 1,225

STANDARD DIMENSIONS & EDGE DETAIL:

	Solid	Engineered
Thickness:	3/4"	5/8" (4 mm wear layer)
Width:	5"	5"
Random Lengths:	2'-10'	2'-10'
Edges:	Microbevel *	Microbevel *

Note: Additional widths and lengths available upon request.

* Microbeveled Edges recommended for prefinished products.

INSTALLATION GUIDE:

	Solid	Engineered
Above-grade	YES	YES
On-grade	YES	YES
Below-grade	NO	YES
Over Radiant Heat	YES	YES

SUSTAINABLE ATTRIBUTES:

CERTIFICATION	Available as FSC-Certified
POSSIBLE LEED CREDITS	MR 4 - Recycled Content MR 5 - Regional Materials MR 6 - Rapidly Renewable Resource (Hardwax-Oil Finish) MR 7 - Certified wood (as FSC-Certified) EQ 4.1 - Low-emitting materials: Adhesives & Sealants (Hardwax-Oil Finish) EQ 4.2 - Low-emitting materials: Paints & Coatings (Hardwax-Oil Finish) EQ 4.4 - Low-emitting materials: Composite Wood & Agrifiber Products (Engineered)

FINISH SPECS: Hardwax Oil

FLASH POINT	ASTM D 93: > 215°F (PenskyMartens)
RESISTANCE TO WATER	(NEN-EN 13442): no visual or tangible changes.
RESISTANCE TO WEAR	(NEN 2072 – Taber Abraser en CS 17 sanding wheels): strong absorption basantol liquid, only after 800 to 1000 rotations.
RESISTANCE TO HEAT	Until 212 °F

Photo Disclaimer: Project and product photos are meant to be a general guide to product appearance only. Due to our handcrafted process and wood being a product of nature, the color, grain pattern, character and profile will vary between individual boards on a project and will never be an exact match.

Janka Rating from similarly tested products - expected to be close to actual measurements of reSAWN TIMBER co.'s products.