

# reSAWN TIMBER co.<sup>TM</sup>

The Value of a Natural Product is Without Equal.

THROUGH BODY COLOR ON ACCOYA®



*Image Shown - Decking and Pool Deck Surround  
OXFORD Accoya Through Body Color*



## Why Specify THROUGH BODY COLOR ON ACCOYA®

**reSAWN** TIMBER co.'s offering of Accoya® wood has expanded to include Accoya® that has been **impregnated with a non-toxic grey pigment** for a **through body color** that is intended to be a **living finish** which will weather naturally in place and requires **no maintenance**. The advantage of these materials is that they are grey from day 1 and can be used to achieve consistent color on all exterior surfaces regardless of facing (north, south, east, west) or application orientation (cladding, roofing, soffits, under side of canopy). This grey color can also be seamlessly carried into the interior walls or ceilings.

Accoya® wood is the result of decades of research and development that has brought together a long-established, extensively proven wood modification technique and leading-edge patented technology – acetylation to create a high performance wood, ideal for outdoor use and challenging applications.

By significantly enhancing the durability and dimensional stability of fast-growing and abundantly available certified wood species, Accoya wood provides compelling environmental advantages over slow-growing hardwoods (which are often unsustainably sourced), woods treated with toxic preservative chemicals, and non-renewable carbon-intensive materials such as plastics, steel and concrete.



Insect Resistant



No maintenance



Through body color



Stable



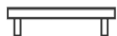
Class 1 Durability



Warranty



FSC® Certified & Cradle to Cradle (C2C) overall Gold certification and Platinum level for Material Health & Water Stewardship



For decking: 1" thick installed 24" on center; 3/4" thick installed 16" on center

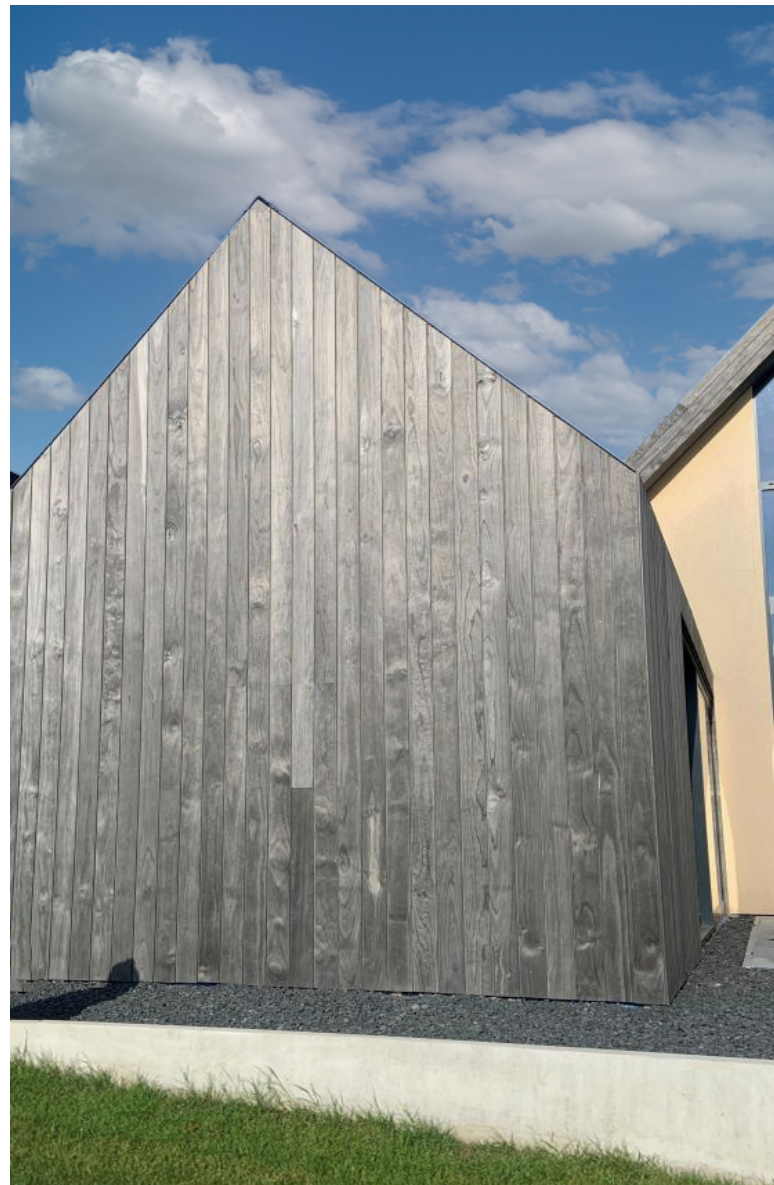


Image Shown - Through Body Color on Accoya Cladding

**reSAWN TIMBER co.'s Product Offering - THROUGH BODY COLOR ON ACCOYA®**



**MARENGO**

Heavy Texture - Exterior & Interior Cladding



**GREY MATTER**

Light Texture - Exterior & Interior Cladding



**OXFORD**

Smooth Face - Decking, Exterior & Interior Cladding

## STANDARD DIMENSIONS AND MILLING

**OXFORD, MARENGO and GREY MATTER are available in the following:**

3/4" thick X 5-3/8" wide X 8-16' random lengths - Tongue & Groove or Shiplap

3/4" thick X 5-3/4" wide X 8-16' random lengths - S4S

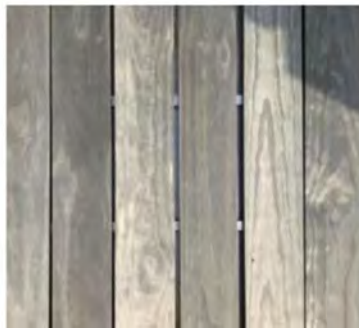
**Additionally, OXFORD is available in the following dimensions and profile for DECKING:**

3/4" thick X 5-3/4" wide X 8-16' random lengths - E4E

1" thick X 5-3/4" wide X 8-16' random lengths - E4E

## WEATHERING GUIDELINES

The photos below show **OXFORD** exposed to northern European climate for a period of 22 months. The color gains depth for the first few months and then becomes a silvery-grey. Based on testing by Accoya, these products do not leach pigment. Weathering for **GREY MATTER** and **MARENGO** is expected to be similar.



As Installed - Day 1



4 Months



12 Months



22 Months

## SUSTAINABILITY



FSC® Certified & Cradle to Cradle (C2C) overall Gold certification and Platinum level for Material Health & Water Stewardship



Contributes to LEED credits



Non-toxic - contact reSAWN for a copy of the letter from the Danish Technological Institute confirming materials are non-toxic

## WARRANTY



- Commercial Warranty: 10 year warranty on Decking; 50 year warranty on cladding, trim and millwork
- Residential Warranty: 25 year warranty on Decking; 50 year warranty on cladding, trim and millwork (except in Florida - for Florida the commercial warranty length applies)
- Terms & Conditions apply - contact reSAWN for full warranty details.





Image Shown - Decking and Pool Deck Surround : Location - France  
OXFORD Accoya Through Body Color

## DECKING INSTALL BEST PRACTICES & PARTNERS:

- For decking: 1" thick installed 24" on center; 3/4" thick installed 16" on center
- Avoid ferrous metals
- Face or hidden fasteners can be used and many fastening systems will work with **OXFORD**
- Use 304 or 316 stainless steel fasteners
- To prevent end splitting, you will need to ensure that the fixing is placed with at least 1" clearance to the end of the decking board with a pre-drilled pilot hole through the boards.

The following companies have informed Accsys of testing performed using their products on Accoya Color with good results. Like with regular Accoya, there are many other options on the market that will also work well.

### [National Nail – CAMO Fastening System](#)

Accoya Color decking has successfully been installed with Camo's easy and affordable hidden fastening system to achieve a fastener-free surface.

### [HIDFast – Hidden Fastening System](#)

HID-fast and the Edge-fast systems have been tested and are ideally suited for the installation of Accoya Color decking, providing a beautiful appearance by hiding the fasteners into position.

### [Protecto Wrap – Joist Tape Wrap](#)

A self-adhering, cold-applied tape used as flashing on deck ledger boards and joists to help prevent moisture penetration around properly installed fasteners.

Providing a non-corrosive barrier between treated lumber and metal hangers. Its Super Stick Technology™ adhesive can stick to damp wood joists, doesn't require a primer and can be applied down to -20°F (-28°C) and high temperature applications.

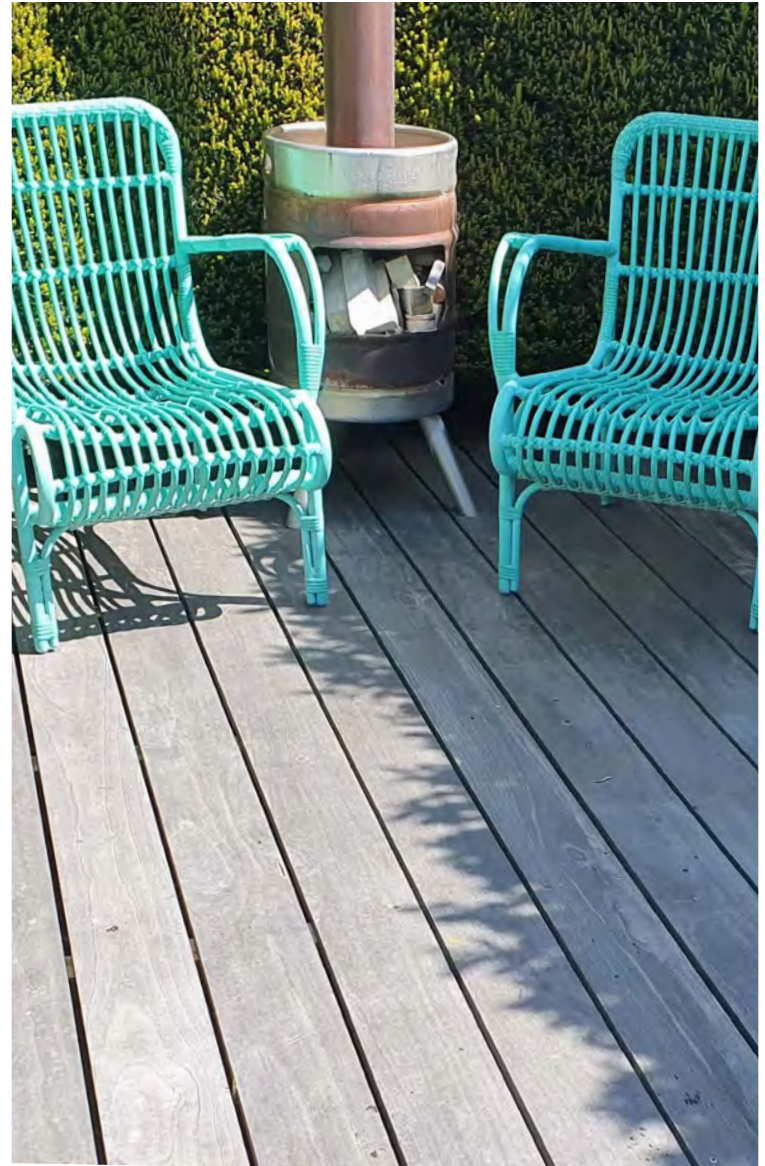


Image Shown - Garden Terrace Oasis Location - The Netherlands  
OXFORD Accoya Through Body Color



## CLEANING GUIDELINES:

**OXFORD, GREY MATTER** and **MARENGO** are unfinished and do not require a finish. They are intended to be a living finish that will weather naturally in place.

### SURFACE MOLD and ALGAE

- Accoya is non-toxic and therefore has no effect on resistance to surface molds and algae.
- In some environments, especially in humid and shaded areas, there is a greater risk of mold and algae growth on Accoya, as is also the case with other decking products. This has no impact on durability.
- Regular cleaning can help mitigate the build up of mold and algae. Surface mold development can further be reduced or delayed by decreasing the level of moisture the wood is subject to or by application of a solution with an appropriate moldicidal efficacy (e.g. biocidal clear primer).

### CLEANING

- It is recommended to clean decking annually (preferably in Spring) using a soft brush and warm soapy water. High pH cleaning products should not be used. Rinse well with clean water after brushing.
- More frequent cleaning may be necessary in certain application as in the case of permanently shaded areas e.g. on the north side of a house or in the immediate vicinity of bushes, big trees or forests.
- Flowerpots and plant troughs should always be lifted from the ground, for example, by strips, spacers or coasters.
- Polluted surfaces can be cleaned with a stiff brush and clear water
- Pressure washers can be used but only with a suitable control device as a direct high pressure water spray can damage all wood – including Accoya wood. If using a pressure washer it should be carried out with some experience and due care.

#### contact us

215.709.2001  
resawntimberco.com  
sales@resawntimberco.com

Copyright © 2022 by reSAWN TIMBER co.

All rights reserved. No part of this document may be reproduced or used in any manner without written permission from the copyright owner except for the use of quotations in a book review.

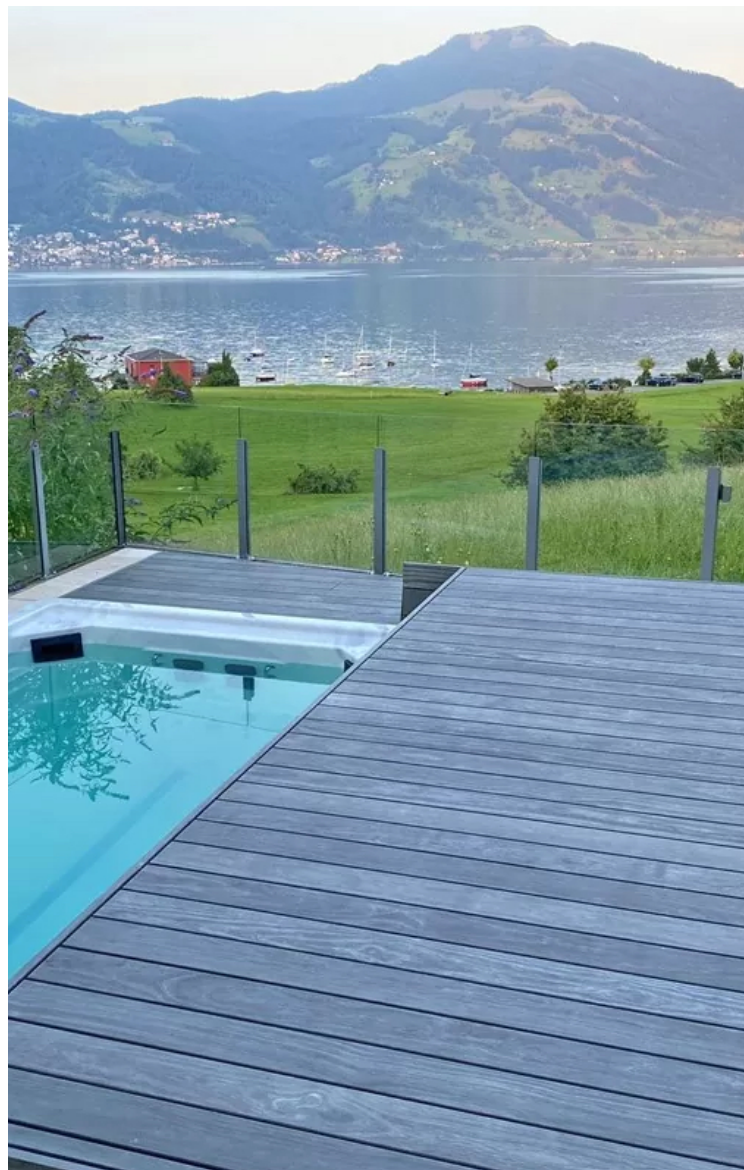


Image Shown - Accoya Decking Pool Cover : Location - Switzerland  
OXFORD Accoya Through Body Color