

WESTERN HEMLOCK - CLEAR VERTICAL GRAIN



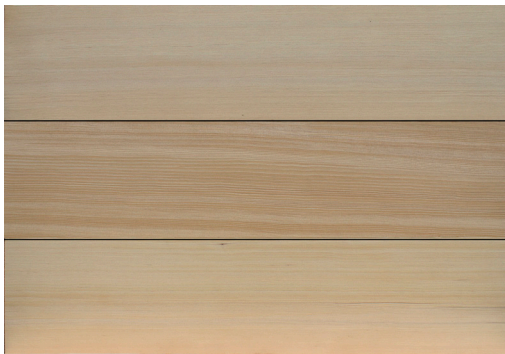
KITTITAS :: CHARRED WESTERN HEMLOCK



MASON :: WESTERN HEMLOCK



GRAY'S HARBOR :: WESTERN HEMLOCK



LEWIS :: WESTERN HEMLOCK



SNOHOMISH :: WESTERN HEMLOCK



BENTON 2.0 :: WESTERN HEMLOCK

Photo Disclaimer: Product photos are meant to be a general guide to product appearance only. Due to our handcrafted process and wood being a product of nature, the color, grain pattern, character and profile will vary between individual boards on a project and will never be an exact match.

SPECIFICATIONS:

Species:	Western Hemlock
Grade:	Clear Vertical Grain
Finish:	Plant-Based, Zero VOC - KITTITAS, MASON, GRAY'S HARBOR, and SNOHOMISH Low VOC - BENTON 2.0 Ultra-Low VOC - LEWIS
Applications:	INTERIOR wall cladding and ceilings - can be used for exterior applications on PROTECTED surfaces such as soffits to achieve a seamless interior/exterior aesthetic.
Janka Hardness:	500 *
Flame Spread Class Rating:	B (ASTM E 84) **
Flame Spread Index:	40 (ASTM E 84) **
Smoke Developed Index:	60 (ASTM E 84) **

NOTE: MOST DESIGNS ARE AVAILABLE FIRE TREATED TO CLASS A FOR INTERIOR APPLICATIONS

CHARACTERISTICS AND GRADE:

The heartwood and sapwood of Western Hemlock are almost white with a purplish tinge. Dark streaks are often found in the lumber; these are caused by hemlock bark maggots and generally do not reduce strength. Western Hemlock is moderately light in weight and moderate in strength. It is moderate in its hardness, stiffness, and shock resistance. The wood is intermediate in nail holding ability and has a tendency to split when nailed. It grows along the Pacific coast of Oregon and Washington and in the northern Rocky Mountains north to Canada and Alaska. Occasionally will contain a sound and small, black pin knot and dark bark streaks. Clear Vertical Grain lumber milled from hemlock is fine textured, straight-grained, free of pitch and it splinters less than other softwood clears. These characteristics make it an excellent wood for molding, millwork and a large variety of interior paneling products. Hemlock contains no pitch.

SUSTAINABLE ATTRIBUTES:

reSAWN's Western Hemlock designs are all made with plant-based, Zero/Ultra-Low VOC finishes.
All Western Hemlock designs are available as FSC®-certified upon request
See below for possible contribution to LEED projects



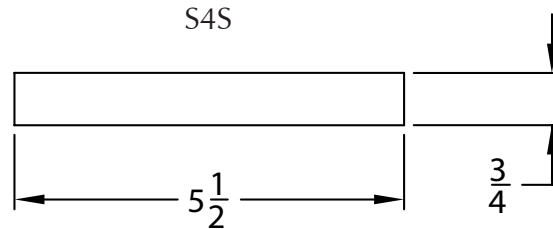
CERTIFICATION	Available as FSC-Certified
POSSIBLE LEED POINTS	Materials and Resources (MR) 5 - Regional Materials (based on project location) Materials and Resources (MR) Credit 6 - Rapidly Renewable Materials (finish) Materials and Resources (MR) 7 - Certified wood (as FSC-Certified) Indoor Environmental Quality (EQ) Credit 4.2 - Low-Emitting Adhesives and Sealants (finish)

* Janka Rating based on general species average for Western Hemlock in accordance with ASTM D 1037-12 testing methods- expected to be close to actual measurements of reSAWN TIMBER co's Western Hemlock products

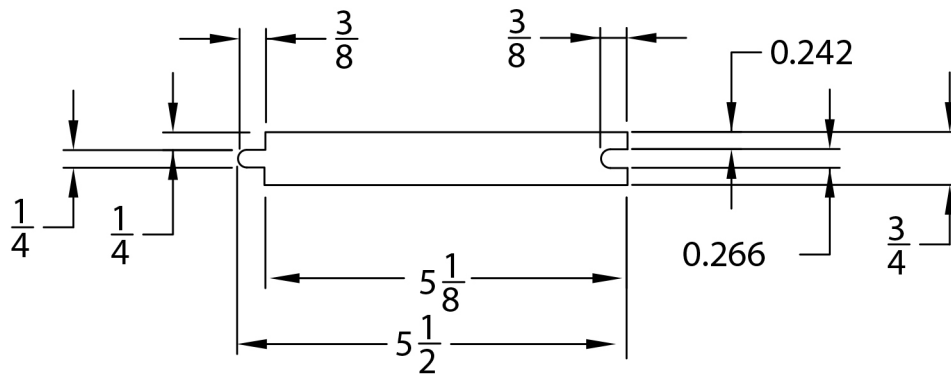
** Class Rating, Flame Spread Index and Smoke Developed Index per Exova Warringtonfire North America on 1" nominal thick unfinished Western Hemlock as reported by the American Wood Council - - expected to be close to actual measurements of reSAWN TIMBER co's Western Hemlock products

STANDARD DIMENSIONS & MILLING:

- 3/4" thick X 5-1/8" wide X 6-16' random lengths - Tongue & Groove or Shiplap
- 3/4" thick X 5-1/2" wide X 6-16' random lengths - S4S



TONGUE & GROOVE



SHIPLAP

